

PRESS RELEASE

TRPR116EN0610

***To mark 50 years of Trespa innovation:
Trespa launches architectural design challenge***

Trespa International B.V., with head office in Weert, The Netherlands, has been manufacturing high quality panels for exterior cladding, interior surfaces and other applications since 1960. This year, Trespa celebrates its 50th anniversary. Over the years, Trespa has become the leading producer of innovative and inspirational façade solutions. To mark the occasion, Trespa International has launched a competition for Architects.

Trespa 50 years

Trespa Meteon has developed from an architectural exterior panel to an impressive and inspirational design oriented range of façade cladding solutions. Today, Trespa panels are the material of choice for the creation of some of the world's most outstanding façades.

Frank Smolenaers, Market Manager Façade Systems for Trespa said: : “In the world of architecture and design, 50 years is a long time. The urban landscape is changing at a tremendous speed. Therefore it is reassuring to know that many of the façades that were created with Trespa panels in the past still look as good today as on the day they were first completed.”

Trespa Architects Challenge 2010

Introducing the Trespa Architects Challenge 2010, Mr. Smolenaers said: “This 50th anniversary is a significant milestone for our company and we certainly want to mark it in style. However, instead of looking back, we prefer to look forward. It is for this reason that we have decided to launch this competition. We invite architects to step 50 years into the future, design a façade, and win a trip to New York or Amsterdam.”

All entries will be judged by a professional jury, which will include key architects, Designers and Trespa representatives.

The 3 winners will each receive a 3 day trip to New York or Amsterdam for two persons. For more information about the Trespa Architects Challenge 2010 and details on the prizes, terms and conditions please visit www.thinktrespa.com/architectschallenge.

Trespa Meteon for almost unlimited design possibilities

Trespa Meteon panels are classified as high-pressure decorative laminates (HPL). These panels are used to create highly individual decorative skins that enhance buildings around the world.

Thanks to their unique characteristics, Trespa Meteon panels offer almost limitless design possibilities. They are very durable in terms of appearance, also in combination with prolonged weather exposure, thanks to their weather resistance and colour stability.

These panels are tough, easy to maintain and safe, as well as environmentally sound. And because they are installed as a ventilated façade, they can help to create healthier buildings.

Trespa Meteon panels are available in a wide choice of standard colours, textures and finishes – or colours can be custom-made.

Trespa

Trespa International, with head office in Weert, The Netherlands, specialises in the manufacture of high quality panels for exterior cladding, interior surfaces and other applications. Trespa has the expertise and in-house resources to provide specific products for many different applications and markets. In addition to their exceptional performance, Trespa products offer the specifier and user the very widest choice of designs, colours and surface textures.

For further information, please contact:

Nancy van Heesewijk
EMG
Lelyweg 6
4612 PS Bergen op Zoom
The Netherlands

Tel: +31 164 317 018

Fax: +31 164 317 039

E-mail: nvanheesewijk@emg.nl

www.emg.nl

Trespa International

Wetering 20
6002 SM Weert

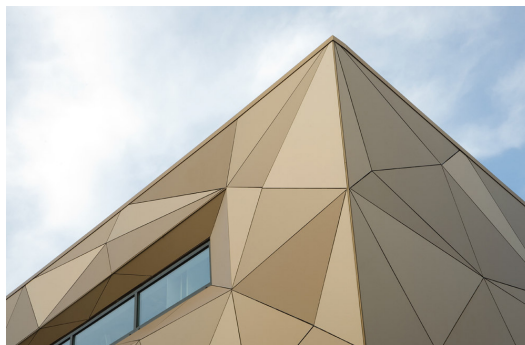
E-mail: info@trespa.nl

Trespa UK

Tel: +44 (0) 1952 290707

Fax: +44 (0) 1952 290101

E-mail: info@trespa.co.uk





This year, Trespa celebrates its 50th anniversary. Over the years, Trespa has become the leading producer of innovative and inspirational façade solutions. To mark the occasion, Trespa International has launched a competition for Architects.

(Photo Trespa, TRPR116)

This press release and relevant photography can be downloaded from

www.PressReleaseFinder.com

Alternatively for very high resolution pictures please contact Nancy van Heesewijk

(nvanheesewijk@emg.nl, +31 164 317 018)